



**WE'LL  
BE  
BRIEF.**

Pitt Law



*Pitt Law* matches the commitment of its students. From enrollment through commencement, Pitt Law supports students through every aspect of the law school experience, from rigorous academics, advocacy for underserved communities, access to the resources of major research universities at the University of Pittsburgh and Carnegie Mellon University, and worldwide practical experience. Our faculty and alumni engage students in new fields of practice. Our dedication to community, equity, and wellness makes the student experience a meaningful beginning to a rewarding career.

# HIGHER AND HIGHER SINCE 1895.

**Pitt Law is committed to delivering excellent legal education, with established legal scholars, challenging specialties, strong bar passage rates, joint graduate programs, and small class sizes.**

Pitt Law encourages talent and provides scholarships for 70 percent of students. The results are impressive. Compared to their peers, Pitt Law graduates obtain significantly more bar passage/JD-advantage jobs. More alumni work at law firms of 250+ attorneys, win more federal clerkships, and choose more public interest jobs than law graduates nationally.







THE FACTS

---

**84.5%**

84.5 percent  
Bar passage rate  
(>US average)\*

*\*2023 ABA first-time  
bar passage rate*

---

**70%**

70 percent of  
students receive  
scholarships

---

**#8**

for U.S. public  
universities  
nationally in  
U.S. News' Best  
Global University  
rankings



# PREPARE FOR IMPACT.

Classes, clinics, specializations, and internships equip Pitt Law graduates to tackle big questions in new fields of practice. As AI, CRISPR, ESG frameworks, and social justice dominate public and corporate policy decisions, leaders will require deep perspectives. Pitt Law offers certificates and concentrations that open unexpected doors.

## EMERGING FIELDS OF PRACTICE

### Environmental and Energy Law

As climate change issues collide with increased energy demand, this specialization examines regulation and sustainability. Coursework in policy, politics, land use, and environmental litigation creates the context. Students can opt for a semester of credit in Washington, D.C. to cap the program.

### Health Law

Pitt Law is a national leader in health law and bioethics through faculty scholarship and partnerships with the Schools of the Health Sciences (including public health and medicine) and UPMC, the state's powerhouse health care system. Students can choose concentrations in bioethics, public health, or regulatory and transactional health law. Students fulfill upper-level writing requirements on a topic of their choice.

### Intellectual Property and Innovation Law

Intellectual property law includes patents, copyrights, and trademarks. Innovation law further examines how new materials, software engineering, biotechnology, and AI intersect with legal issues in established and start-up ventures. The curriculum offers paths to a legal career alongside entrepreneurs and other innovators.

### International and Comparative Law

A global economy demands a broad outlook. Pitt Law's international law faculty supplies it. The Center for International Legal Education (CILE) serves both American and foreign students, alumni, and the local legal community. On-campus coursework supports summer study programs, the prestigious Willem C. Vis International Commercial Arbitration Moot competition, and internships in Europe, Africa, and Asia. These opportunities often lead to full-time careers.

### Civil Litigation

The John P. Gismondi civil litigation concentration is taught exclusively by practicing trial attorneys well versed in the drama and action of the courtroom. In these upper-level courses, class sizes average fewer than 20 students. The result is a deep dive into litigation technique unique among U.S. law school curricula.



JOINT GRADUATE DEGREES

Pitt Law welcomes students who choose to pursue simultaneous degrees at both the University of Pittsburgh and Carnegie Mellon University.

**JD/MPA, JD/MPIA, JD/MID**

Law and Public Administration, Public & International Affairs, or International Development

University of Pittsburgh  
Graduate School of Public and International Affairs

**JD/MBA**

Law and Business Administration

University of Pittsburgh  
Joseph M. Katz Graduate School of Business; Carnegie Mellon University Tepper School of Business

**JD/MPH**

Law and Public Health

University of Pittsburgh  
Graduate School of Public Health

**JD/MSISPM**

Information Security Policy

Carnegie Mellon University  
Heinz College

**JD/MA**

Law and Bioethics  
University of Pittsburgh

Dietrich School of Arts and Sciences; Center for Bioethics and Health Law

**JD/MSPPM**

Law and Public Policy and Management

Carnegie Mellon University  
Heinz College; School of Public Policy & Management

**JD/MAM**

Law and Arts Management

Carnegie Mellon University  
Heinz College; School of Public Policy & Management





Professor **Peter Oh**'s scholarly and teaching interests are in corporate law and economic analysis of law. His work has been cited by numerous prominent courts, including the Supreme Court of the United Kingdom. He has been described as "the country's foremost thinker on issues of veil piercing," and his contributions to this area are "among the most important of any scholar working today."



# OUTSTANDING COUNSEL.

Our faculty members are among the country's most distinguished legal scholars. They're also passionate teachers who thrive on guiding and mentoring students.

Pitt Law professors define bioethics, illuminate discrimination, and clarify intellectual property disputes. They advise the founders of new democracies and provide sharp perspectives on civil liberties in the United States. Pitt Law champions free, worldwide sharing of legal and judicial reporting in JURIST, where law students publish international news and primary source documents for a weekly audience of over 20,000 worldwide. Pitt Law also convenes legal symposia on topics from health care to evolving constitutional law and hosts experts for lectures and debates.

Energy and insight: Faculty bring it. With fewer than 25 students on average in 2L and 3L classes, the vibe is relaxed and respectful. Many of the friendships forged in Barco Law Building extend to networking after graduation. The annual benefit for the Pitt Legal Income Sharing Foundation, which raises scholarship funds for students electing public interest summer internships, gets enthusiastic support from professors' talent and donations.

## THE FACTS

---

### Innovation Experts

Adjunct professor Snow Zhang (JD '16) is a co-founder of Ultron-AI, a CMU spinoff using an AI-product identification platform. She served as associate licensing manager for CMU's Technology Transfer Office and is a Project IP Manager for CMU's Biometrics Center.

---

## TOP 1/3

Pitt Law is recognized in the top 1/3 of law schools for scholarly impact.\*

\* St. Thomas School of Law study, 2021

# 5:1

Pitt Law's  
5:1 ratio of  
students to  
faculty ranks  
in the top 10  
nationally.



↑ Recognized as a leading scholar in tax policy for non-profits, **Phil Hackney** spent five years in the Office of the Chief Counsel of the Internal Revenue Service. His X account @EOTaxProf has been cited by Forbes as one of the top 100 accounts to follow on those issues. He has testified before U.S. Senate and House subcommittees as a recognized expert on proposed legislation.

“I advise student groups editing the *Pittsburgh Tax Review*, a peer-reviewed journal. I love working with them—they have real dedication.”

“Immigration practice is extremely challenging because the law changes by the minute. We are the current events clinic.”

↓ Professor **Sheila Vélez Martínez** is the Jack and Lovell Olender Professor of Asylum Refugee and Immigration Law. She is also Director of the Center for Civil Rights and Racial Justice and founded the Immigration Law Clinic. Ten students enroll in the clinic, contributing 2,800 hours each year to the immigrant and refugee community.



## SCHOLARLY. CONNECTED.



Since the *Dobbs* decision, **Greer Donley** has applied her health law expertise to advocacy work and is a well-known national media commentator. Professor Donley helped design, draft, and pass the first abortion shield law in Connecticut, which has now been replicated in many states and cities. She also helped draft an FDA Law Scholars amicus brief in the *Alliance for Hippocratic Medicine v. FDA* case and helped draft the citizen petition to the FDA to add miscarriage management to the mifepristone label. Prior to law school, she was a fellow in the Department of Bioethics at the National Institutes of Health. She is faculty advisor to the Pitt Law Women's Association.

“Pitt is a medical research powerhouse that values interdisciplinary collaboration. I’ve been fortunate to affiliate with CONVERGE, an interdisciplinary center addressing gender health equity. I regularly hire law students as research assistants to help me with this research.”



“Our clinic students are committed to serving those with the least access to the law in the most empowering ways possible.”



**Jabeen Adawi** advocates for the rights of gender-based violence survivors. Prior to teaching at Georgetown University, she launched the Victim Legal Network of DC (VLNDC)—a legal referral infrastructure clearing the pathway between a crime survivor and legal help. She directs the Family Empowerment and Legal Access Clinic, a rigorous year-long course.

# COMMITTED.

# INTERNSHIPS AND PUBLIC SERVICE: CHECK.

## THE FACTS

### More Federal Clerkships

Pitt Law routinely places the largest number of students in prestigious federal clerkships as compared to its peers.\*

*\*10-year average*

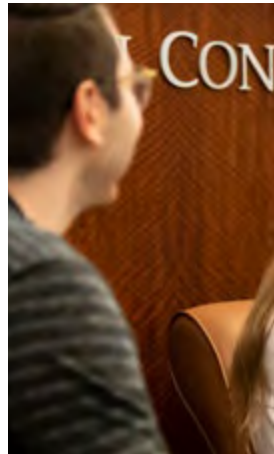
### Public Service Externships

Students seeking externships can work with non-profits, government agencies, and courts, building their local networks among the local bar and judiciary.

## Community engagement is the foundation of law practice and preparation.

The Pennsylvania State Supreme Court certifies Pitt Law students to work as legal interns, providing free assistance to the public through clinics. By your second year you may elect clinics in [family law](#), [elder law](#), [the environment](#), [tax](#), and [immigration](#).

But first, the basics. All first-year students enroll in Pitt Law Academy, a six-part introduction to a life in the law including a focus on wellness, professional identity, and diversity, equity and inclusion, to name a few.





**“As lawyers and leaders in every facet of the region’s public and private sectors, we’re at the center. There’s an amazing culture of hard work: Get the knowledge, go out and make a difference.”**

VICE DEAN JERRY DICKINSON



**“As an intern in the Allegheny County District Attorney’s office, I secured a conviction for a third degree misdemeanor for harassment in the workplace. The young victim stuck with it and showed a lot of strength. I got that verdict for her. I’m proud of that.”**

GRACE MANNIX (JD '24)

# 25+ COUNTRIES. UNLIMITED OPPORTUNITIES.

**Pitt Law students specialize in the real, tackling issues far beyond Barco.**

Internships and externships offer global opportunities, pro bono work for needy clients, and other career-defining breaks.

Working and studying in dozens of locations across the globe, Pitt Law students prepare for careers in diplomacy, conflict resolution, and international trade. Back on campus, courses in foreign languages and legal cultures at Pitt Global, the University Center for International Studies, prepare students for transnational practice.





## STUDY WITH A PASSPORT

Aiding the prosecution of individuals for genocide and war crimes in the International Criminal Court in The Hague. Debating international commercial arbitration issues at the annual Vis Moot in Vienna. Working with refugee NGOs in Southeast Asia. Pitt Law students pick up once-in-a-lifetime opportunities (and lifelong professional relationships) through Pitt Law's international law certificate program.



### THE FACTS

#### 20K Hits a Week

Sixty students help publish JURIST, Pitt Law's influential online source on international legal news and decisions, honing writing skills and earning credits in the newsroom. JURIST has been the world's only law school-based news service for more than 20 years.



#### Semester in D.C.

Every spring semester, 2Ls and 3Ls can earn 14-16 credits through hands-on experience in law and policy with Washington, D.C. government offices or non-profit employers.

# A DYNAMIC NETWORK.

**The eds, meds, and tech center of the regional economy? Right here in Oakland, and powered by research at Pitt and CMU.**

Surrounded by start-ups, Pitt Law shares the entrepreneurial spirit of its neighbors.

Pitt Law teams compete with ambitious student entrepreneurs in the university-wide Big Idea Competition, and have won major cash prizes.

CMU students are invited to participate in Pitt Law's Start Smart program. The annual series covers six to eight practical how-tos for start-ups, like company entity organization and visa issues. Pitt Law students match with student teams. Alumni from K&L Gates, and Dentons Cohen and Grigsby donate time to lead these popular networking events.







**THE FACTS**

**Recent externships and internships by Pitt Law students**

U.S. Department of Justice, Civil Division, Torts Branch

Nashville Predators

National Public Radio

UPMC Corporate Law Department

Pennsylvania Innocence Project

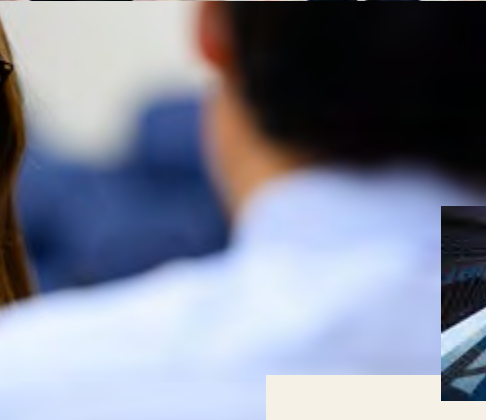
PNC Financial Group

Cozen O'Connor

Jones Day

U.S. Department of the Interior, Office of the Solicitor

Rocky Mountain Immigrant Advocacy Network



**Step into the Workplace**

Pittsburgh start-ups in biomedicine, autonomous vehicle research, and artificial intelligence have amped up Pittsburgh's tech sector, offering new venues for legal practice. Robust international firms like PNC Financial and Kraft Heinz have been mainstays of the city's economy for nearly two centuries. National retailers American Eagle Outfitters and Dick's Sporting Goods, headquartered here, continue their global expansion. Three of the largest law firms in the nation (Reed Smith, K&L Gates, and Buchanan Ingersoll & Rooney) serve clients in all those fields. Bench and bar connections abound: Pitt Law alumni set a high bar locally by taking leadership roles in civic and political causes across the spectrum.



**90%**

Pitt Law's job placement numbers for JD positions and JD-advantage posts routinely exceed 90 percent a year.

urth A. Steers

C&H

**CURTIN & HEEFNER**  
ATTORNEYS AT LAW  
Office: 215.736.2521



**ALAN HERTZBERG**  
Judge

COURT OF COMMON PLEAS  
OF ALLEGHENY COUNTY  
816 CITY-COUNTY BUILDING



**ANDERSON  
&  
LABOVITZ**

**ALYSSA M. ZOTTOLA, ESQ.**  
O: 412-345-8904

**Stephen C. Tanzilli, J.D.**  
Dean  
Rowland School of Business

201 W.  
PITTSF  
West P  
412-40  
Pittsburgh

**Dibella Weinheimer**  
Geer McAllister Best Coco Lloyd Whalen  
**Amy J. Coco, Esquire**  
awcoco@d-law.com  
412-586-2142

Finance Building  
1400  
2025  
February

se@dentons.com  
4788  
1400

14th Floor  
P.C.

**McGuireWoods**

**Penny E. Zacharias**  
Partner

**Tony J. Thompson**  
Counsel  
Legal Department  
thompsonj@dollarbank.com  
Direct: 412-263-8419  
Fax: 412-591-2498

20 Starum Street  
20<sup>th</sup> Floor  
Pittsburgh, PA 15222

**DollarBank**  
Member FDIC

**LINDSEY E. HOLZER**  
Associate  
lindsey.holzer@bipc.com

Union Trust Building  
501 Grant Street, Suite 200  
Pittsburgh, PA 15219-4413  
O 412-562-1376  
F 412-562-1041

**BIPC.com**

COM

ALTH OF PENNSYLVANIA



**Jason Landau Goodman**  
Assistant Counsel  
Governor's Office of General Counsel

Department of Environmental Prot  
Southeast Regional Office  
2 East Main Street  
Northampton, PA 19401

**POINT  
PARK**  
UNIVERSITY

**Superior Court of Pennsylvania**  
**MARY JANE BOWES**

**LEECHTISHMAN**  
LEECHTISHMAN FUSCALDO & LAMP

**Connor P. Sease**  
Associate

# EVIDENCE OF SUCCESS.

Eleven thousand strong, Pitt Law alumni practice in 50 states and 40 countries. They support students with generous scholarships and internships. And they welcome students at casual get-togethers beginning before the 1L year.





Home to the University of Pittsburgh's student body of 30,000.

Home to Dippy the Diplodocus. Home to award-winning restaurants and academics. Home to a walk in the park and free summer concerts.

# OAKLAN BARCO. PITT

**Your home at Pitt Law.**

Home to you, your colleagues, and peers.  
Home to the law library, moot court,  
and fueling up with coffee in the SideBar Café.







# D. -SBURGH.

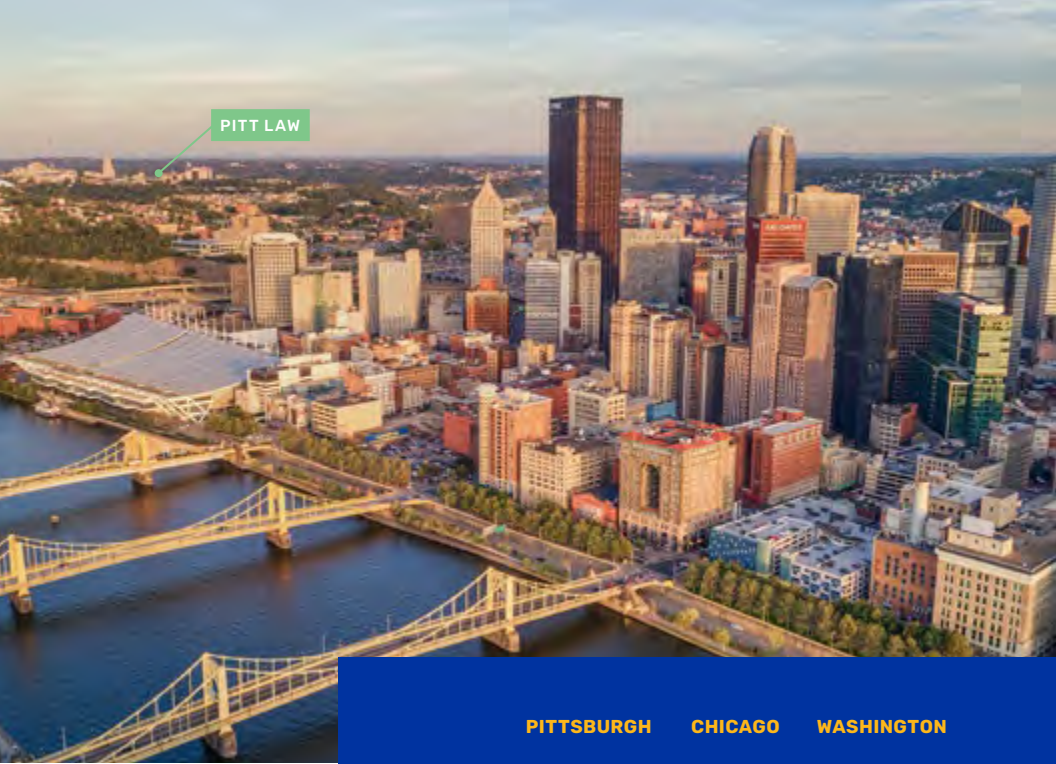


**Home to a network of 1.2 million.**

Home to history and innovation.  
Home to world-class culture and hall-of-famers. Home to racing pierogies and french fries on... *everything*.



PITT LAW



## THE FACTS

America's Most Livable City

*Forbes*

Top 10 Smartest Places to Live

*Kiplinger*

Top 10 Tech Towns

*Wired*

10 Least Stressed Out Cities

*CNN Money*

Top 10 Safest Cities in U.S.

*Farmers Insurance*

PITTSBURGH

CHICAGO

WASHINGTON

median home

\$230,000

\$364,000

\$643,000

apartment rental

\$1,511  
Per Month

\$2,206  
Per Month

\$2,335  
Per Month

public transit

FREE  
PRT  
w/ Pitt ID

\$2.50  
CTA

\$6  
WMATA

signature dish

\$10.25  
Primanti Bros.

\$26.45  
Deep Dish Pizza

\$13.50  
Half Smoke  
and Fries

baseball ticket

\$46  
Pirates

\$70  
Cubs

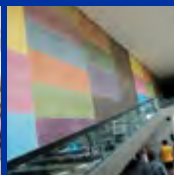
\$93  
Nationals

art museum

FREE  
Carnegie Museum  
of Art w/ Pitt ID

\$26  
Art Institute  
of Chicago

\$20  
Phillips  
Collection





# EXCITING. AFFORDABLE.

In arts, music,  
and pro sports,  
Pittsburgh punches  
above its weight.

Pittsburgh's vibrant cultural offerings are both world-class and affordable. And values in housing, commuting, and entertainment make the town a law student's best friend.

## SUSTAINABLE

Free pass to  
Pittsburgh Regional  
Transit with Pitt ID

33 miles of riverside  
fun on the Three Rivers  
Heritage Trail

POGOH bike share:  
600 bikes, 60 stations,  
and even e-bikes

## SOCIABLE

Voted #25 in Most  
Fun Cities in America  
*(wallethub)*

Marathon, music  
festivals, Pride parades  
and more

Top Ten City  
for Singles *(Zumper)*

## SMART

The best-educated  
neighborhoods in the  
city are steps from the  
adjoining campuses of  
Pitt and CMU:

30 percent of residents  
in Squirrel Hill, Point  
Breeze, and Shadyside  
hold professional or  
doctoral degrees.

**“At Pitt Law,  
I’m getting the  
best opportunities  
in the city that’s  
going to be my  
professional home.”**

COLIN UHER (JD '26)





# YOU BELONG AT PITT LAW.

**Mens sana: Pitt Law views student wellness as a priority.**

Case in point: The Mindful Lawyer, a two-credit course offered each semester, and other programs examine the particular challenges of addictions and physical and financial stress in the legal community. Students can even earn credit for an intersession course in coping strategies. The University Counseling Center offers professional and peer counseling, addiction cessation, psychiatric services and more. The University's recreation and fitness facilities are open to all students. Off-campus, law students are eligible for wellness programs offered by the legal community.

Our office of equity, diversity, and inclusion underscores our commitment to social wellness and community. And because financial struggles are real for many Pitt Law students, our financial aid staff works with individuals to connect them to university, state, and federal sources of support throughout their education.







THE FACTS

20%

Underrepresented students comprise 20 percent of our entering classes.

50

Pitt Law alumni and donors support 50 scholarships each year.



**"It's a collaborative and welcoming environment. Upperclassmen are eager to help. Faculty are the same way. That made the first year experience so much better."**

MADELINE YINGLING (JD '26)



# COMMIT TO PITT.

Apply for the Pitt Law JD program from September 1 through our deadline of May 1. Applications are considered only for the current year for the fall semester, and students are accepted for full-time, three-year enrollment. We require all applicants to submit their applications online through the Law School Admission Council (LSAC).

Pitt Law is highly competitive, and admissions decisions are based on many factors. The committee carefully evaluates graduate work, professional experience, and applicants' undergraduate GPA. Applicants are required to register with the Credential Assembly Service (CAS) through LSAC and must take the LSAT, GRE, or JDNext.

The Pitt Law admissions committee employs a rolling admissions process. Scholarship decisions are made at the time of acceptance.

Discover Pitt Law at information sessions and open houses throughout the academic year. Visit [law.pitt.edu](http://law.pitt.edu) for a complete list of dates.

## **Tuition and Fees**

Tuition and fees for the University of Pittsburgh School of Law are adjusted each year based on recommendations from the University of Pittsburgh Board of Trustees. These tuition rates and fees are announced online in July.

## **Scholarships and Financial Aid**

Pitt Law offers exceptional value: 70 percent of the student body receives scholarship funds from Pitt Law in the form of merit or need-based scholarship awards. Every admitted student is considered for scholarship awards at the time of admission to Pitt Law. All scholarships are renewable for the second and third years of law school. Students may also take advantage of other aid, including guaranteed loans.

**JUSTICE**

We strive to attain equal justice under law, and to assure that justice benefits everyone across our society.

**INTELLECTUAL RIGOR**

We challenge ourselves and others to critically examine facts and ideas meticulously and from diverse perspectives.

**CIVILITY**

We treat people with unconditional respect and an assumption of good faith, giving meaningful consideration to the ideas, beliefs, and feelings of others as a matter of professionalism and self-discipline.

**INCLUSION**

We strive to create an environment where persons of differing backgrounds are welcomed, where different perspectives are respectfully voiced and respectfully heard, and where every individual is valued and included.

**WRITER**

Christine O'Toole

**DESIGN**

Landesberg Design

**CONTRIBUTING PHOTOGRAPHERS**

Tom Altany

Michael Artman

Terry Clark

Aimee Obidzinski

Christopher Sprows

Jonathan Wright

**PRINTER**

RR Donnelly



